



absi

**Aleutian and Bering Sea Islands
Landscape Conservation Cooperative**

Evaluating Risks from Vessel Traffic in the Aleutians and Bering Sea

Aaron Poe and Douglas Burn (ABSI)
Martin Robards (Wildlife Conservation Society)

ABSILCC.org
Twitter: @ABSILCC
Aaron_Poe@fws.gov

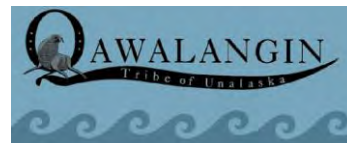
What is a *Landscape Conservation Cooperative* or “LCC”?

- Public-private partnerships focused on tackling BIG landscape issues too large for any one entity to handle
- 22 LCCs across the United States, Canada, Mexico, Pacific Islands and the Caribbean
- Largely funded by U.S. Fish and Wildlife Service but have 100s partners including agencies, tribes, NGOs, universities and industry
- **Many LCCs have a current focus on coastal resilience issues...**

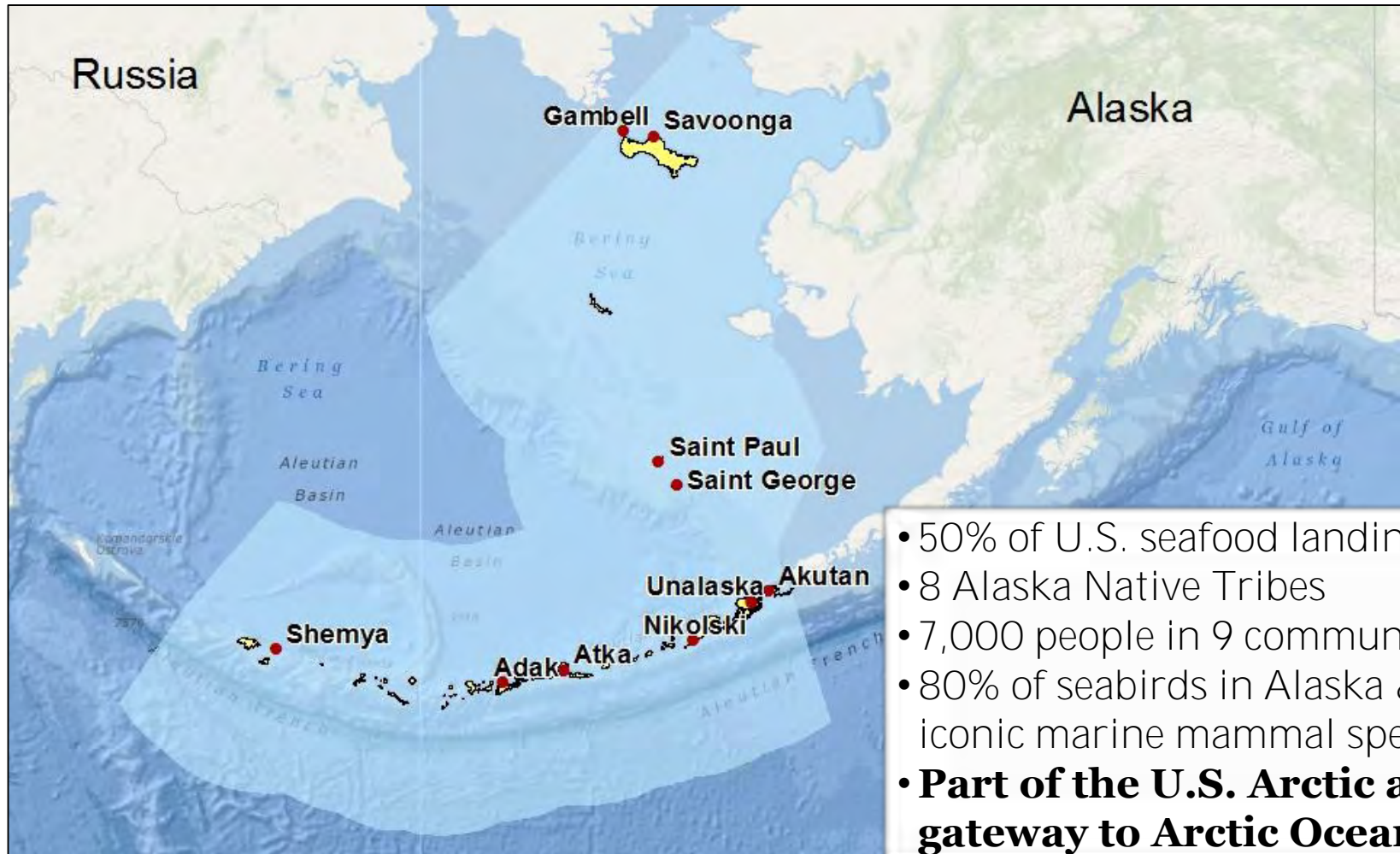


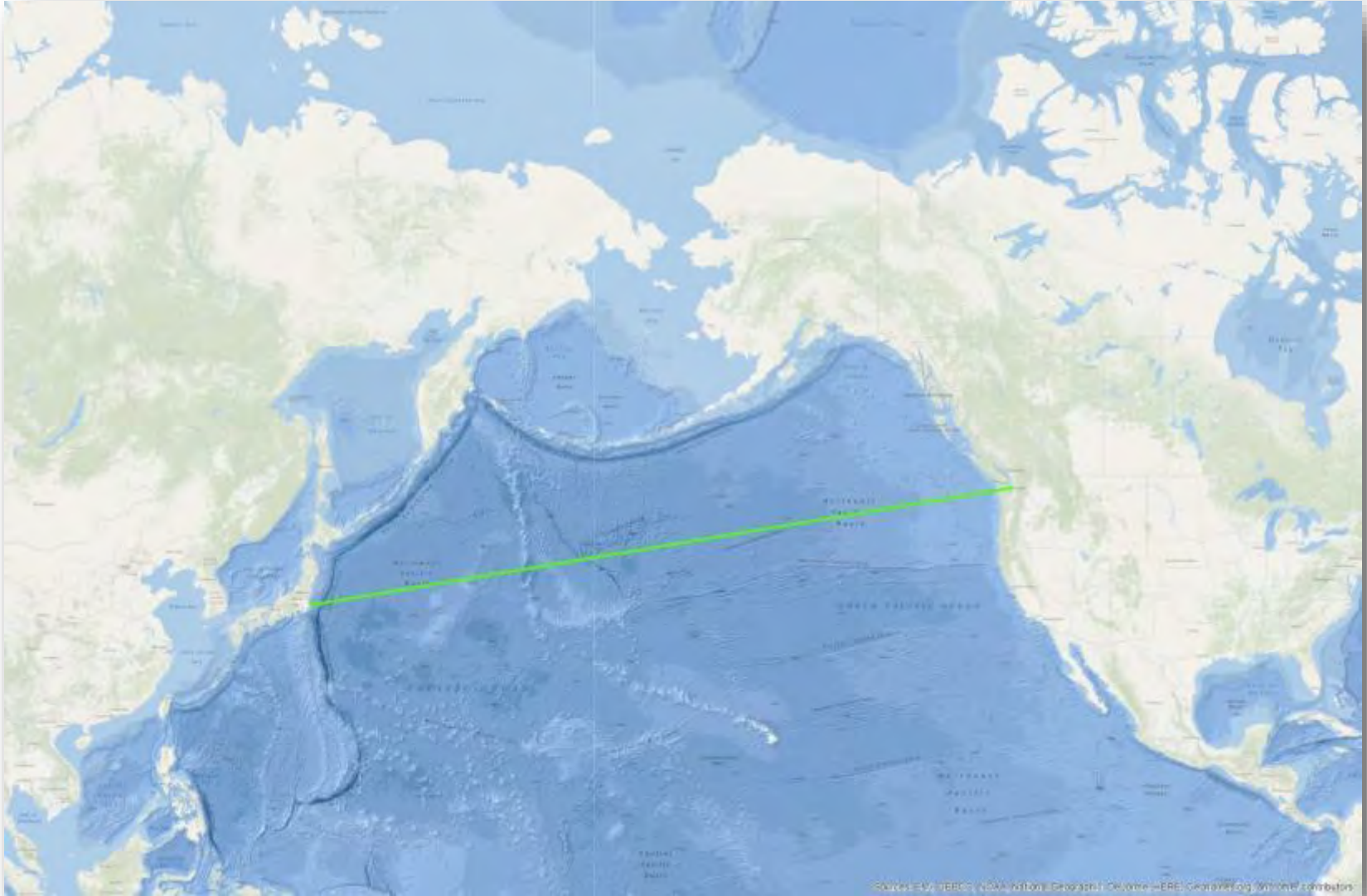
Our Steering Committee

- Bureau of Ocean Energy Management: **Carol Fairfield (Chair)**
- National Park Service: **Tahzay Jones (Vice Chair)**
- Aleutian Pribilof Islands Association: **Karen Pletnikoff**
- Alaska Climate Science Center: **Jeremy Littell**
- NOAA: **Steven Davis & Shannon Fitzgerald**
- Pacific Birds Habitat Joint Venture: **Tom Rothe**
- Qawalangin Tribe: **Chris Price**
- U.S. Fish and Wildlife Service: **Robb Kaler & Jeff Williams**
- U.S. Geological Survey: **Grant Hilderbrand & Durelle Smith**
- **And just recently--Alaska Seagrant: Melissa Good!**



Geography, resources and communities





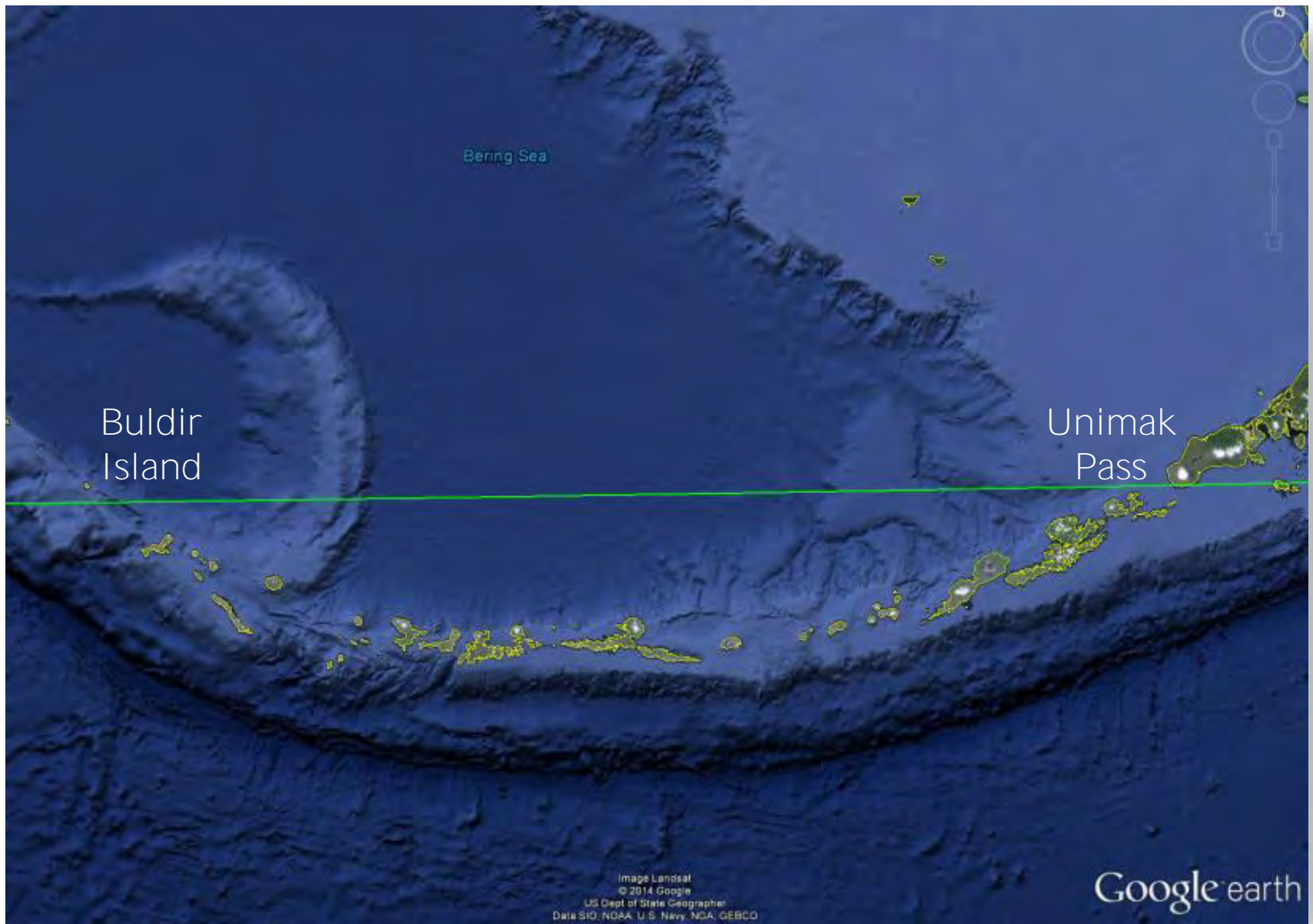


Image Landsat
© 2014 Google
US Dept of State Geographer
Data SIO, NOAA, U.S. Navy, NGA, GEBCO

Google earth

absi

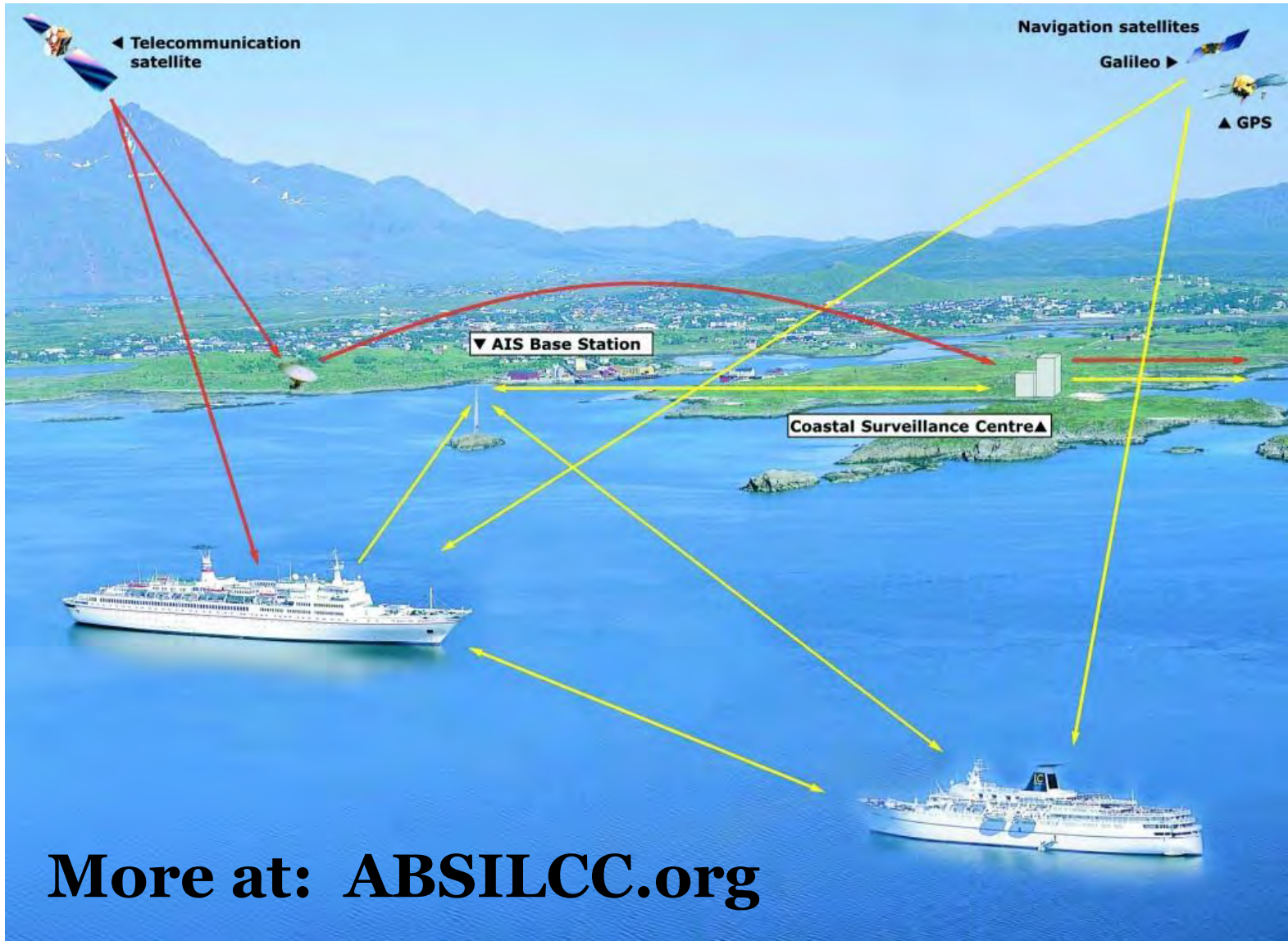
MV Selendang Ayu – December 8th 2004



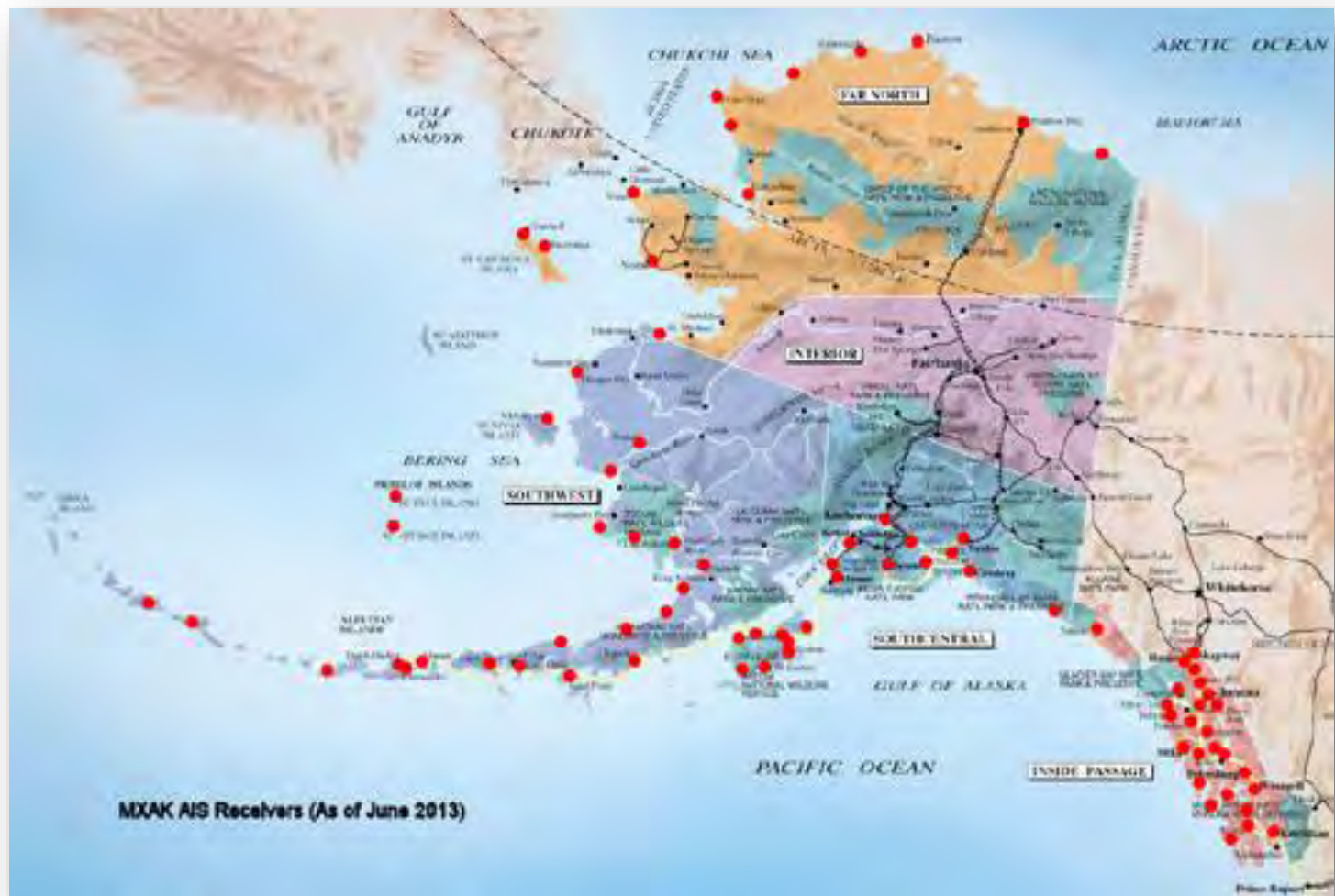
A focus on industrial traffic



Vessel tracking by *Automatic Identification System* or “AIS”



More at: ABSILCC.org



Browser: http://162.242.230.187/vts/AView.aspx?code=113%3flat%3d54.1580114720063&lng=-165.782318115233&z

File Edit View Favorites Tools Help

ABSI Fishnet jQuery Quicktime Concur absilcc.org Employee Express FWS Lands Mapper Alaska Airlines Doodle InsideFWS JFWM

Silver

Filter [Color-Coded Types]

Search Find Show ETA Link

- ALASKA PIONEER (0m)
- ALASKA SPIRIT (0m)
- AM EXPRESS (0m)**
- BARBARA J (0m)
- BILLIKIN (2m)
- BRISTOL MARINER (0m)
- CAVEK (0m)
- CG MUNRO (0m)
- CLAIRE OCEANA (0m)
- COMMODORE (0m)
- CONSTELLATION (0m)
- CONSTELLATION (0m)
- FARWEST LEADER (0m)
- KAIA (0m)
- KARI MARIE (0m)
- KISKA SEA (0m)
- MYXAK DITCHER ATON (0m)
- NORWESTERN (0m)
- PACIFIC SOJOURN (0m)
- PACIFIC VENTURE (0m)
- SAGA (0m)
- SAINT PETER (0m)
- SIBERIAN SEA (0m)
- SILVER SPRAY (0m)
- SOUTHERN WIND (0m)
- STIMSON (0m)
- STORM PETREL (0m)
- SUMMIT SW (0m)
- TRIDENT (0m)
- US LIBERATOR (1m)
- WESTERN MARINER (0m)

Map: Unimak Island, Akun Island, Sedanka Island

10 NM / 20 km

Not for Navigational Use

Wind Dir.: 320° Wind Speed: 41Kn Wave Height: 12ft / 3.7m Temp.: 39°F / 3°C

Visible: 31 A: 27 B: 3 AtoN: 1 Users: 24

© 2014 Marine Exchange of Alaska | About Us | Contact Us

Web VTS Pro Plus v7.10.04 Powered by SiiTech

100%

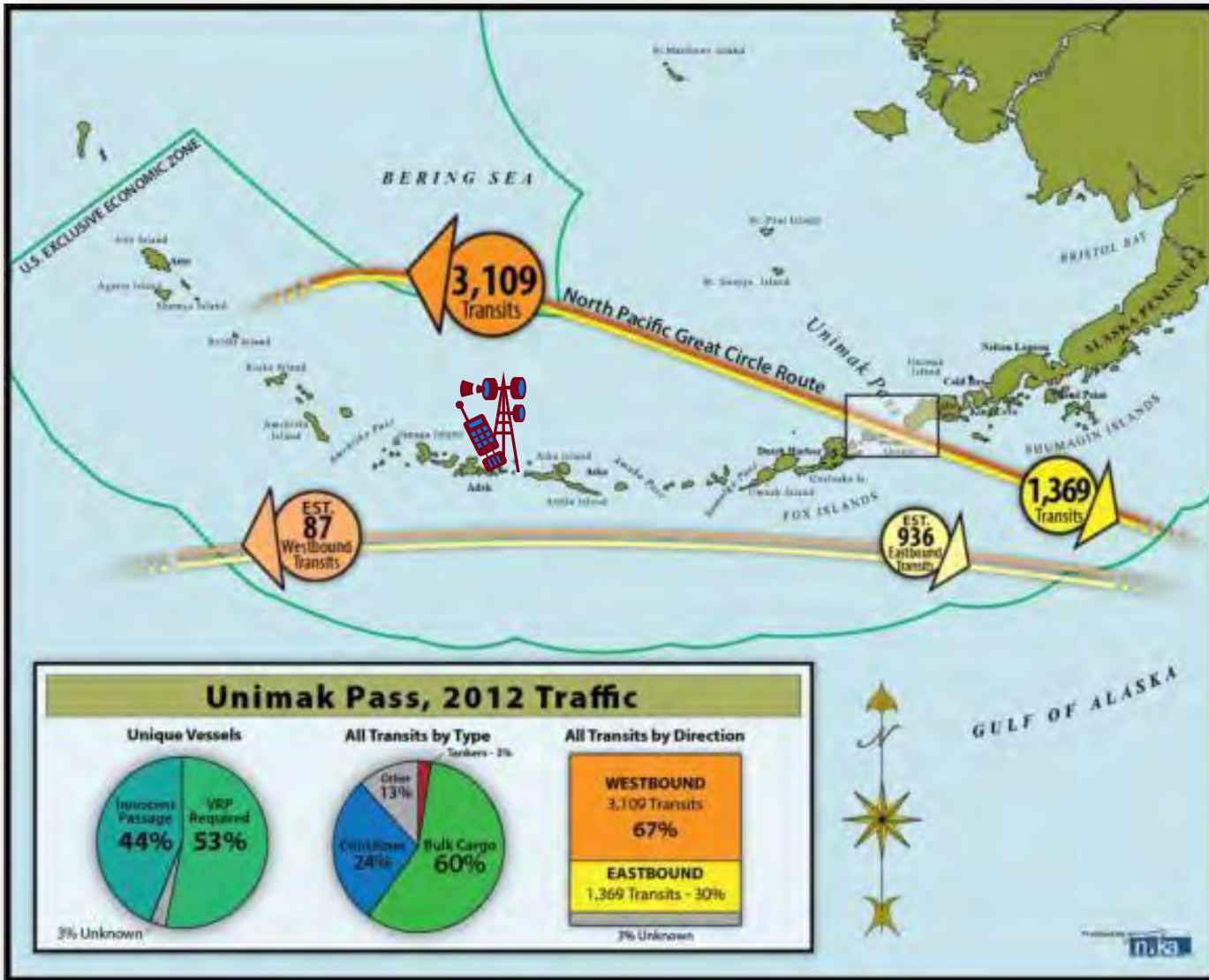
Ship Information - Windows...

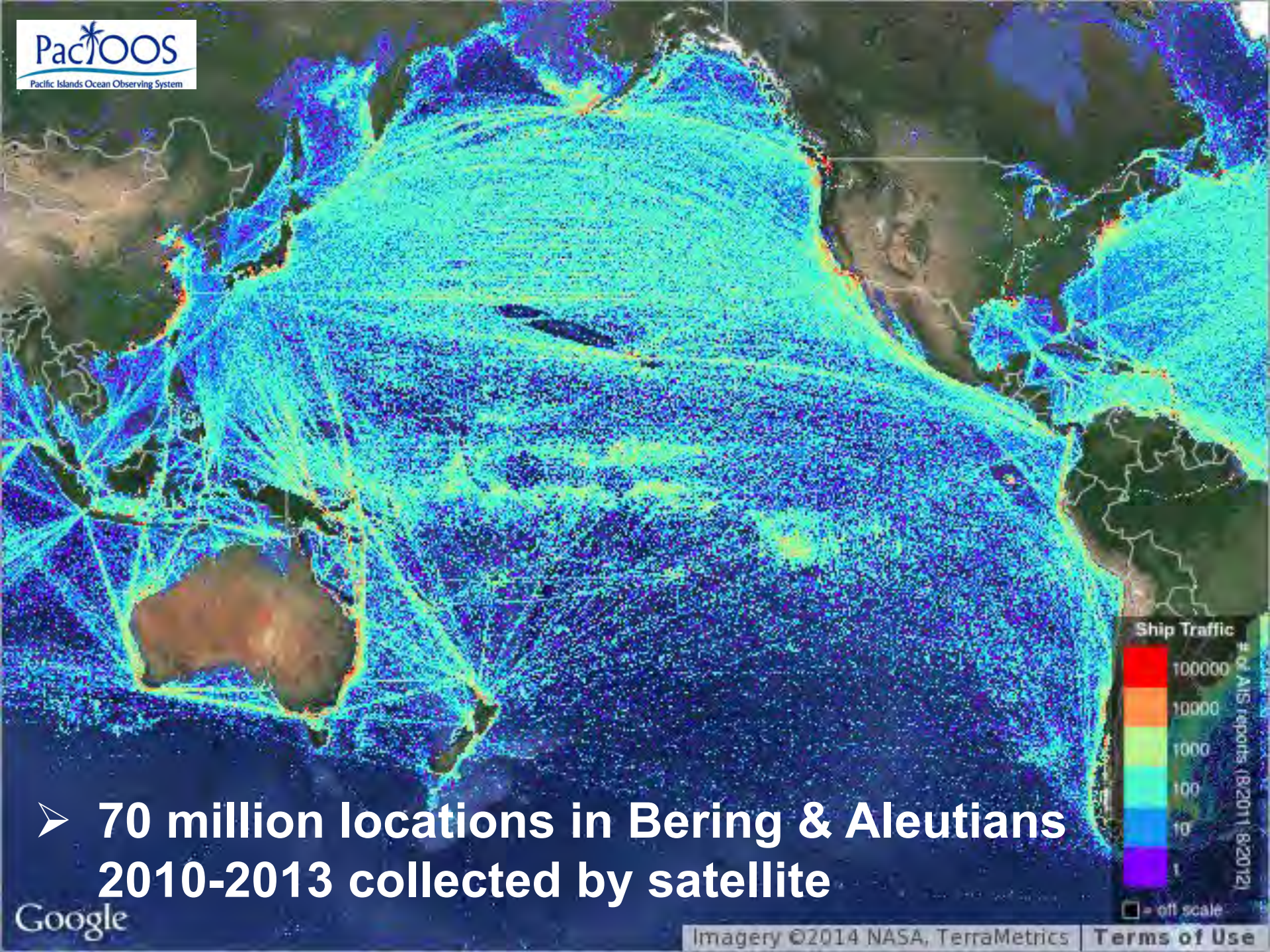
http://162.242.230.187/vts/ShipInformation.a

SHIP INFORMATION	
Name	AM EXPRESS
MMSI	477655300
IMO	9461350
Call Sign	VRGC7
Type/Cargo	Cargo ship
Length x Beam	222m x 32m
Draught	11.8m
Nav. Status	Under way using engine
Last Seen UTC	10/28/2014 11:31 PM
Last Seen Loc	10/28/2014 3:31 PM
Latitude	54°17.224'N
Longitude	164°26.417'W
Nearest MM	
Speed	8.6knt(9.9MPH)
Course	274°
Heading	277°
Rate of Turn	0°/min
Destination	DANGJIN S.KOREA
ETA	11/9/2014 12:00 PM
Last AIS UTC	10/28/2014 11:31 PM
Last Sat UTC	10/28/2014 9:52 PM
Last AIS Lat	54°17.224'N
Last AIS Long	164°26.417'W
Last Sat Lat	54°15.123'N
Last Sat Long	164°02.707'W
Pos. Accuracy	Low (>10m)
Pos. Fix. Dev.	GPS

Close



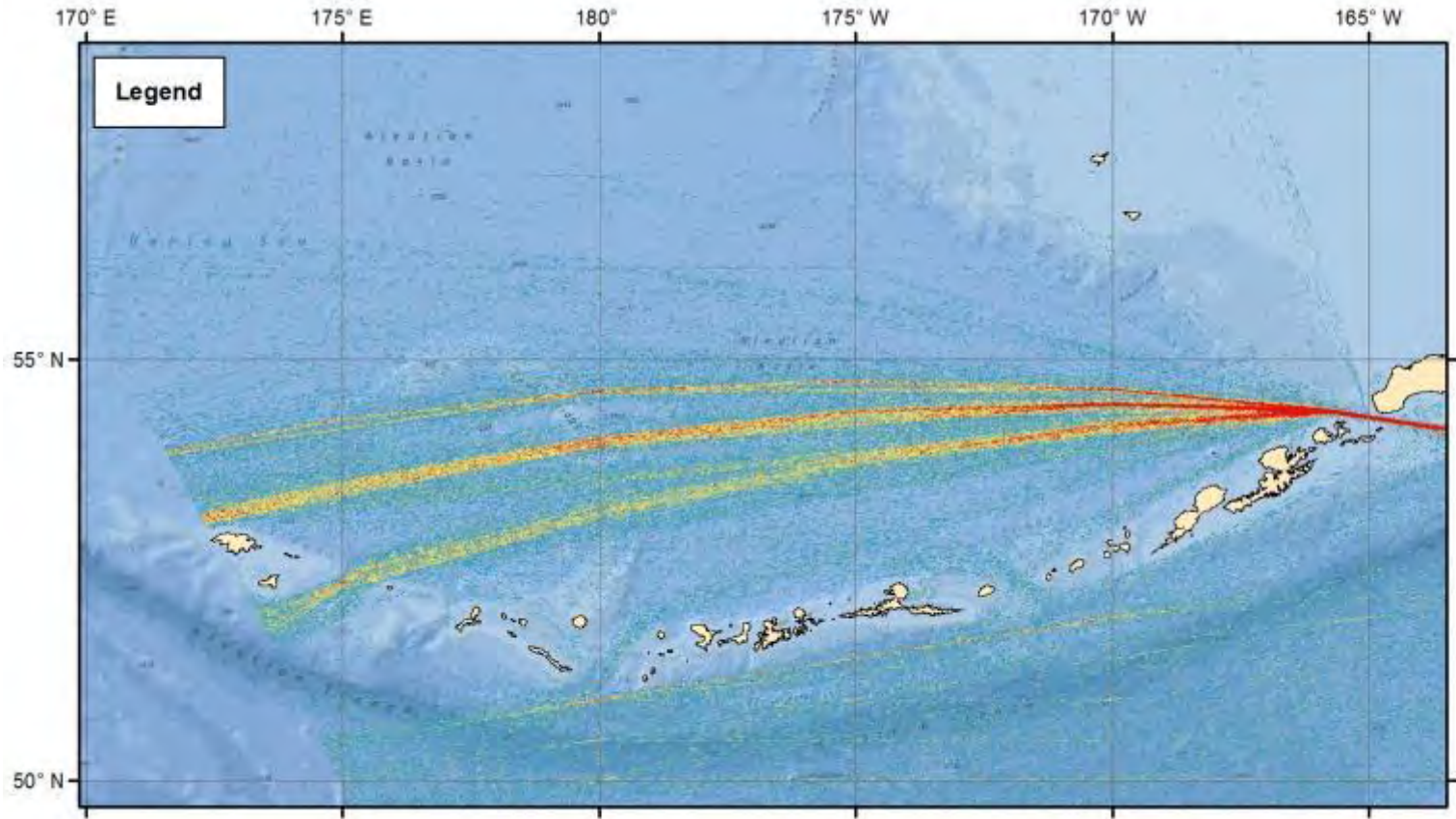




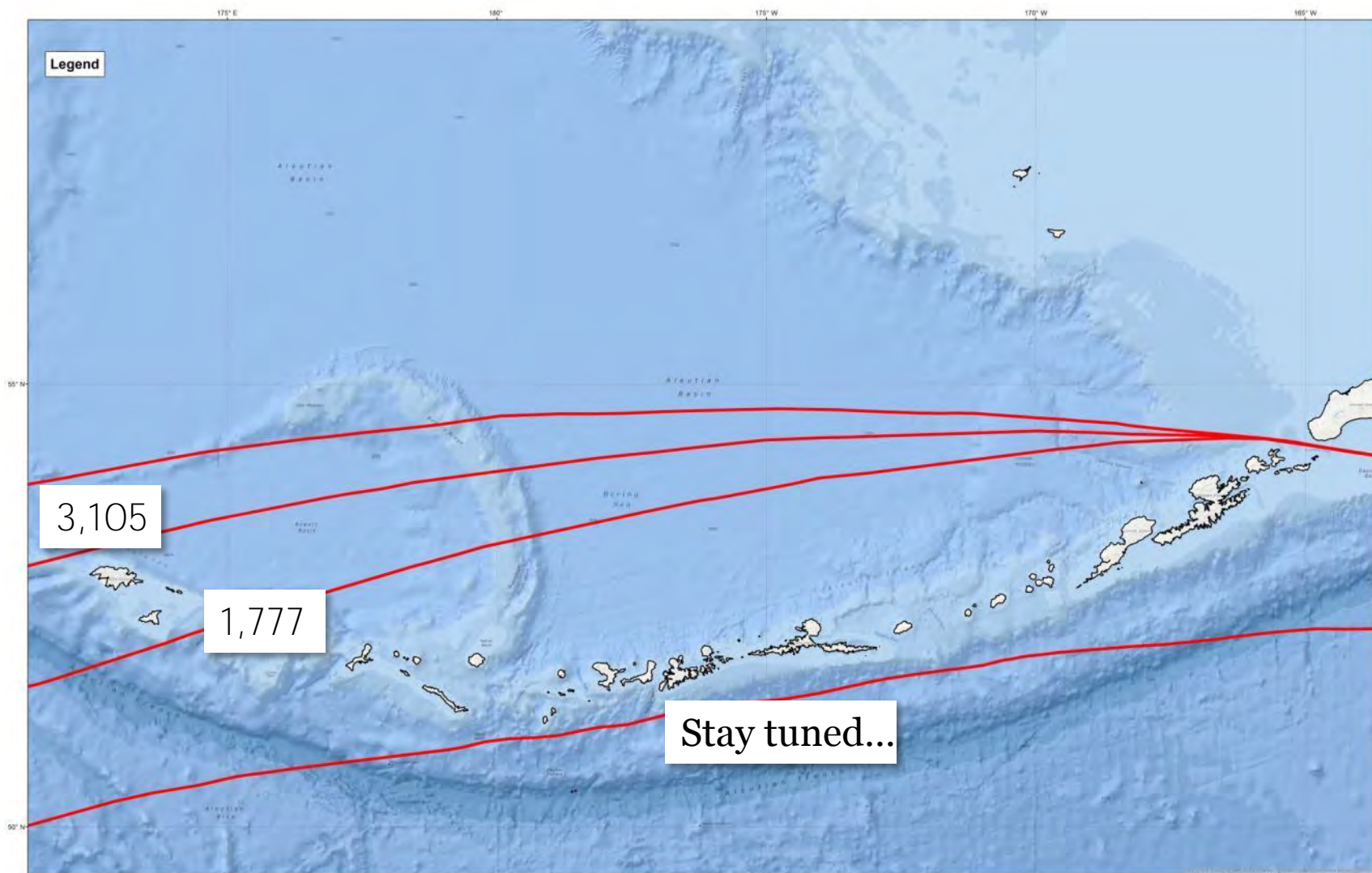
➤ **70 million locations in Bering & Aleutians
2010-2013 collected by satellite**



70+ million vessel locations 2010-2013 collected by satellites



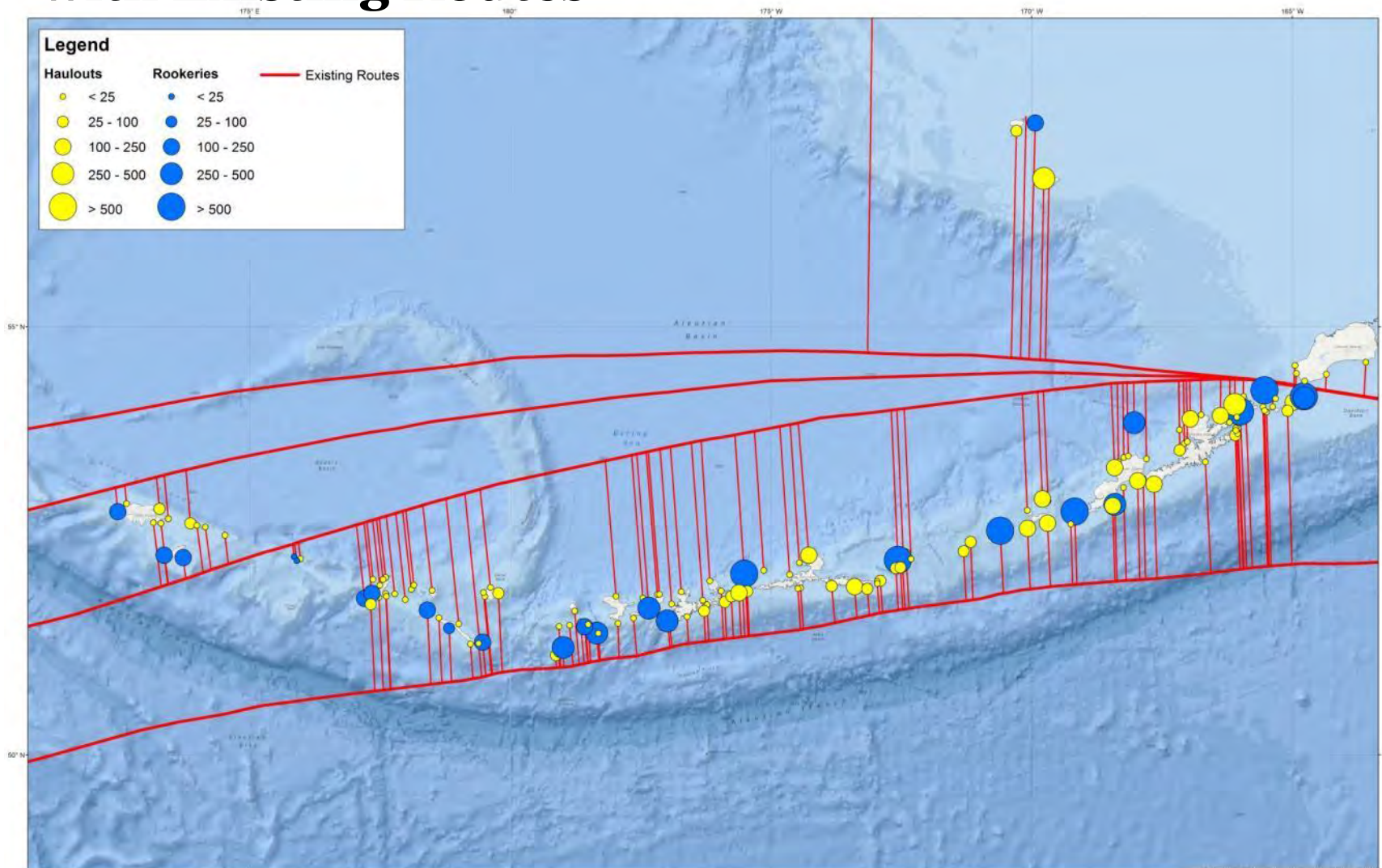
Existing Routes





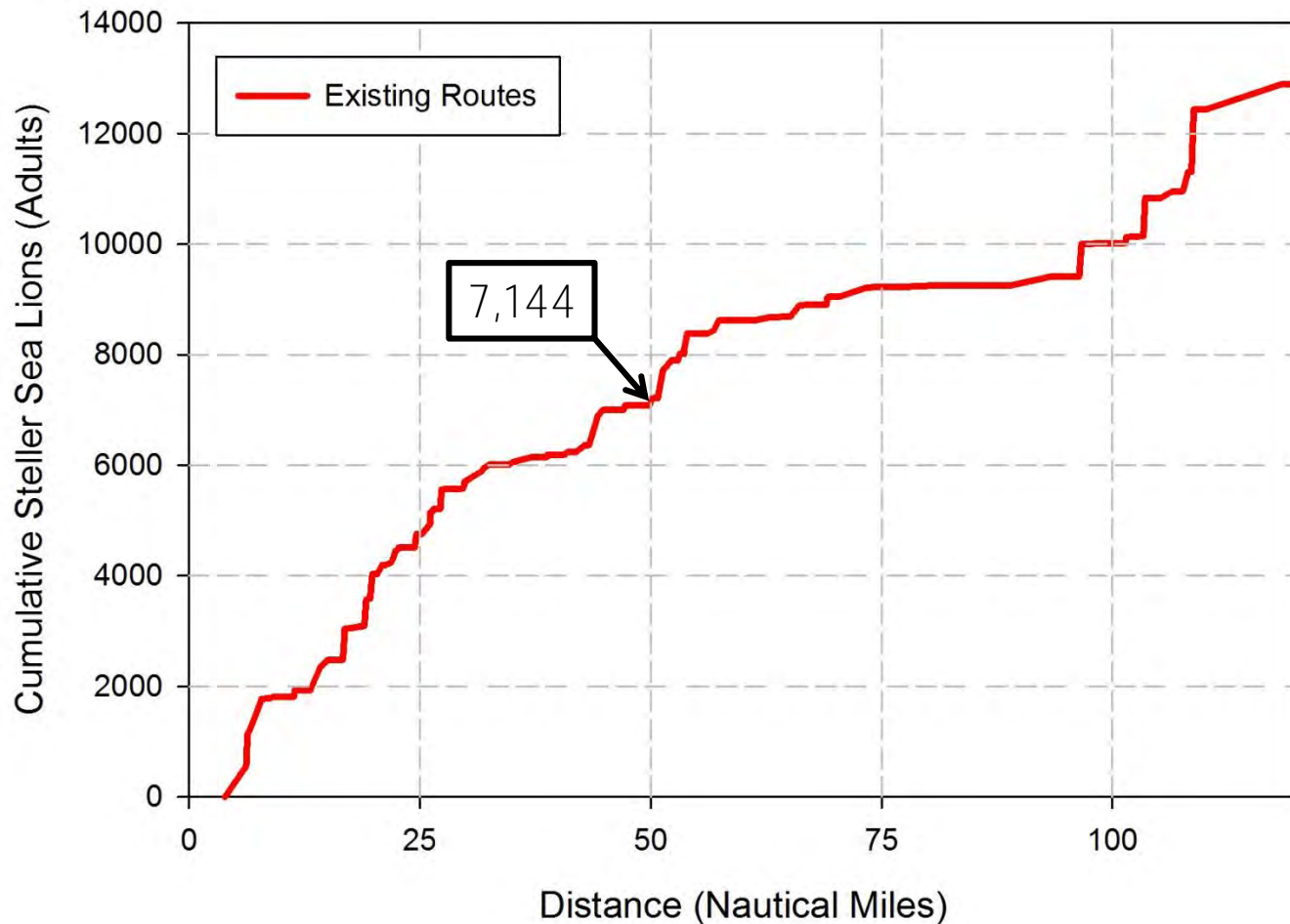
absi

Steller Sea Lion Haulouts and Rookeries with Existing Routes

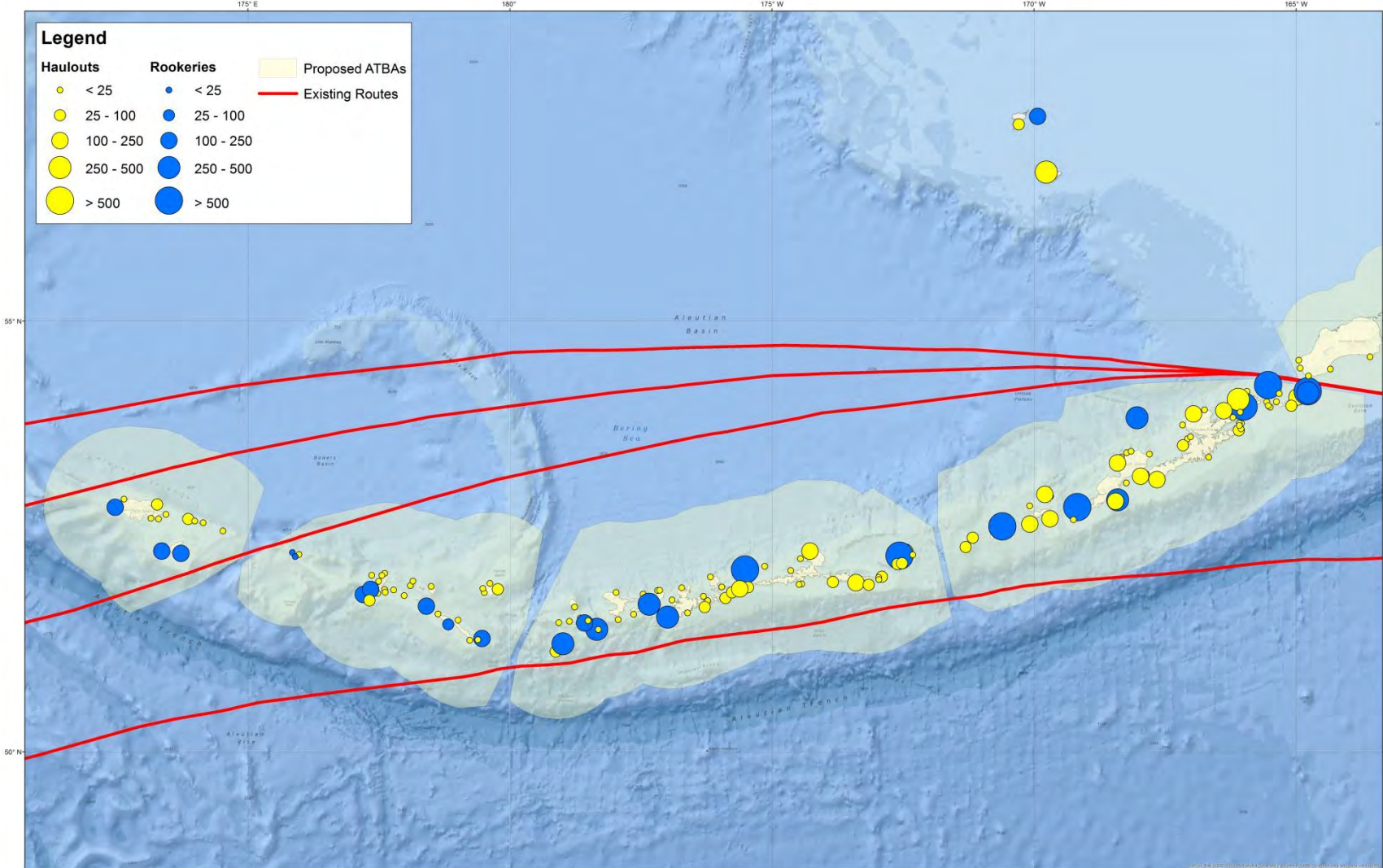


Steller sea lion adult count data from <http://www.afsc.noaa.gov/nmml/alaska/sslhome/databases/>

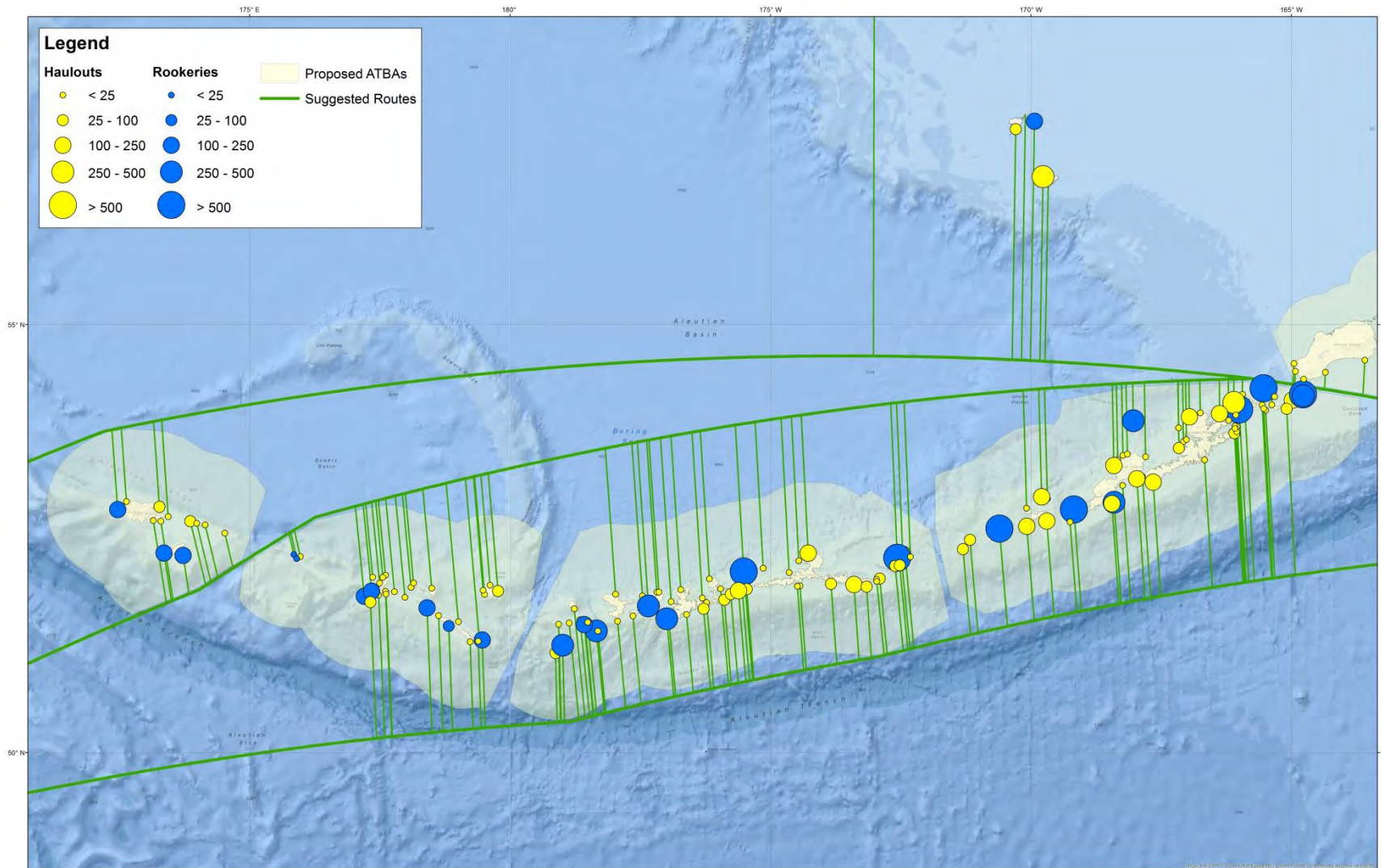
Steller Sea Lion Haulouts and Rookeries with Existing Routes



NEW International Maritime Organization, Areas to be Avoided in 2016

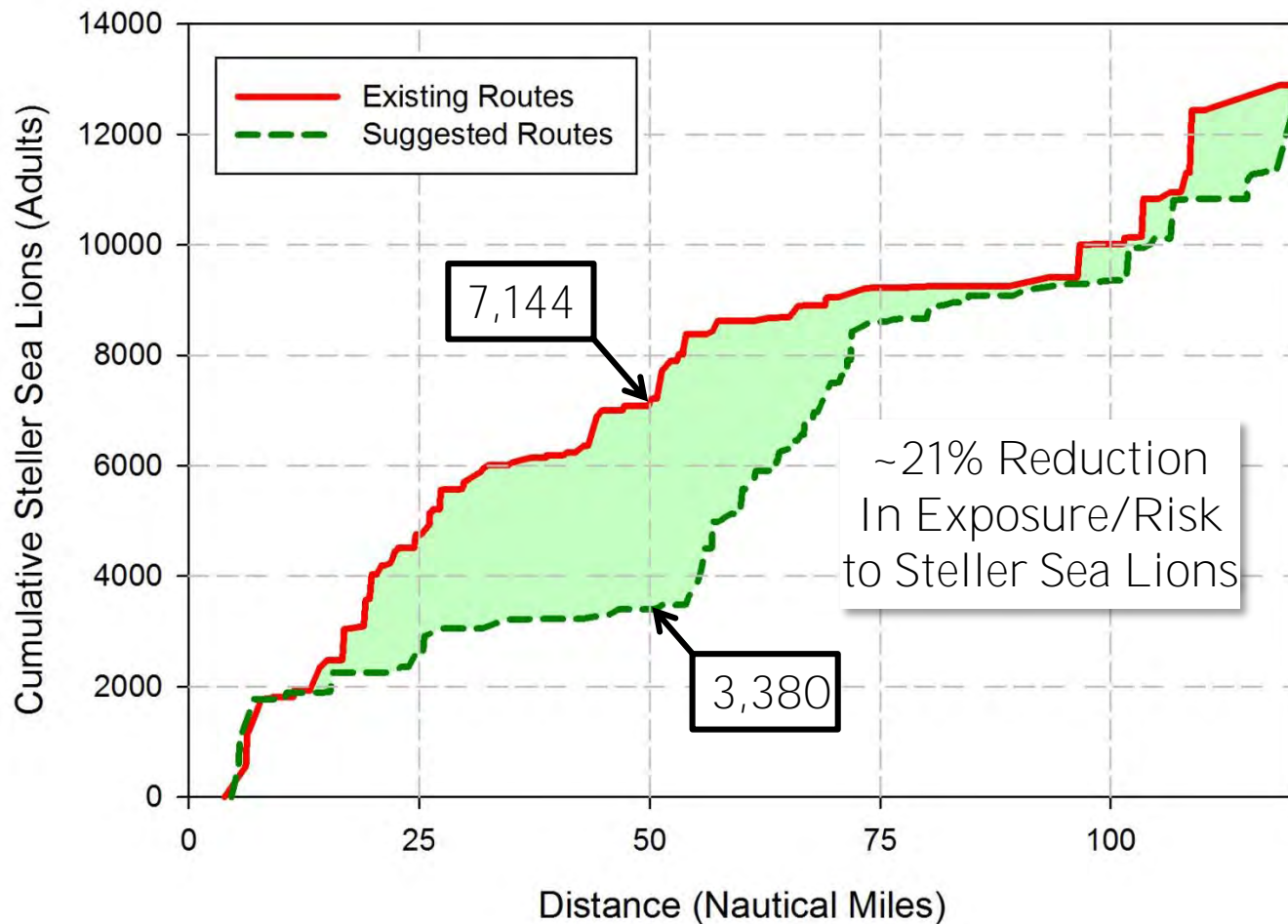


Steller Sea Lion Haul-outs and Rookeries with Suggested Routes



Steller sea lion adult count data from <http://www.afsc.noaa.gov/nmml/alaska/sslhome/databases/>

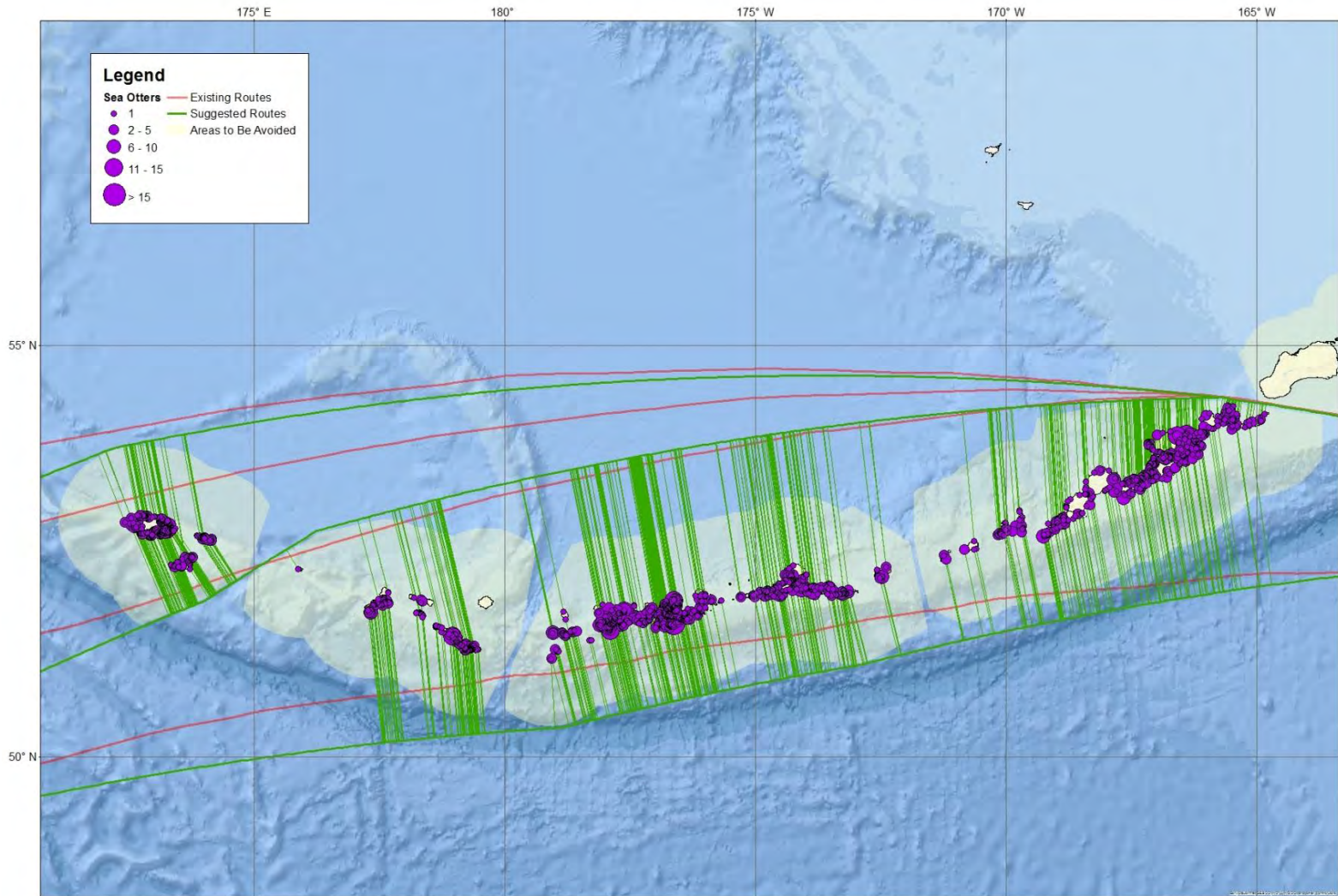
Steller Sea Lion Haulouts and Rookeries with Suggested Routes





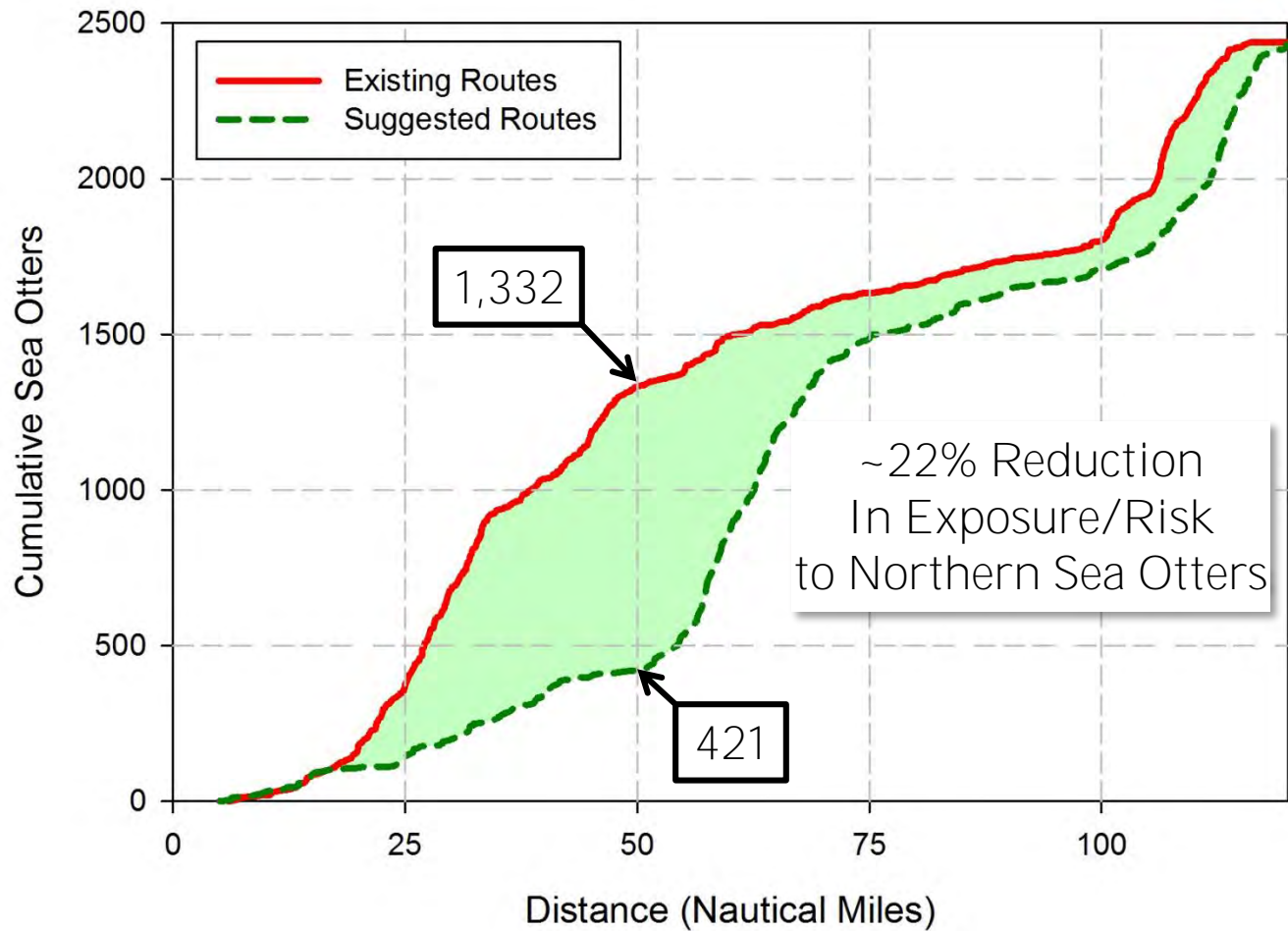
absi

Northern Sea Otter Sightings

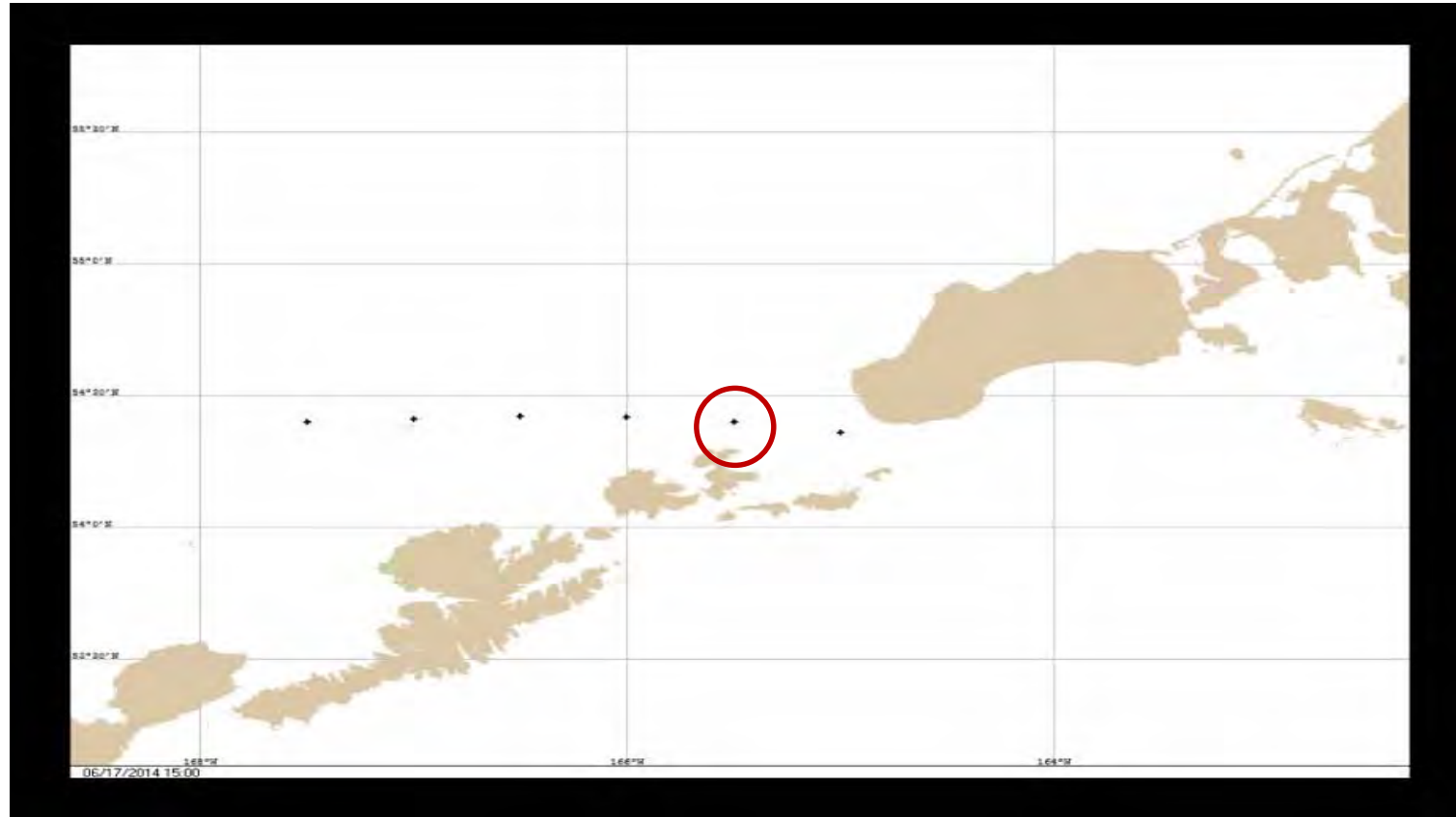


Northern sea otter data from Doroff et al. (2003)

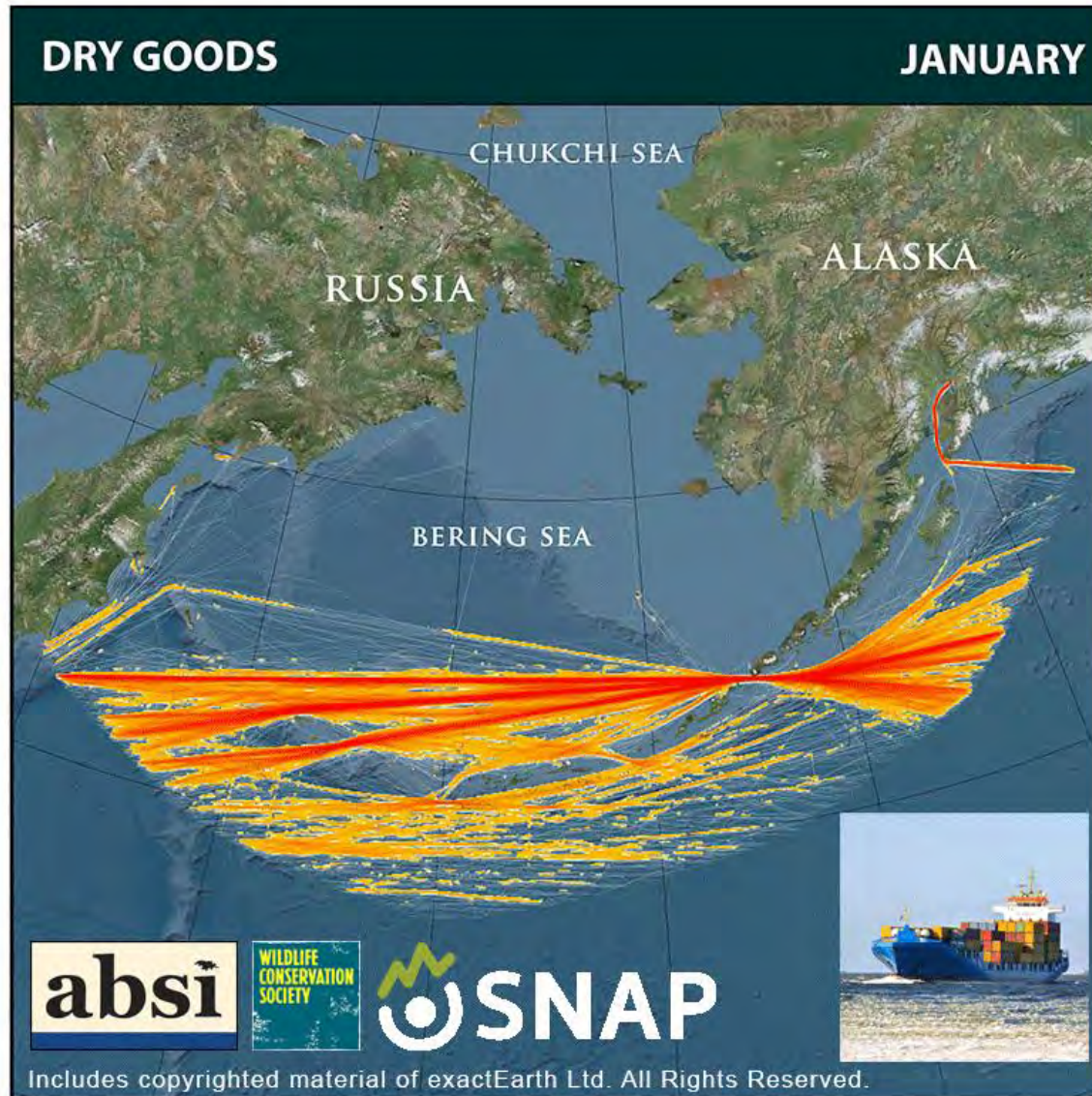
Northern Sea Otters with Suggested Routes



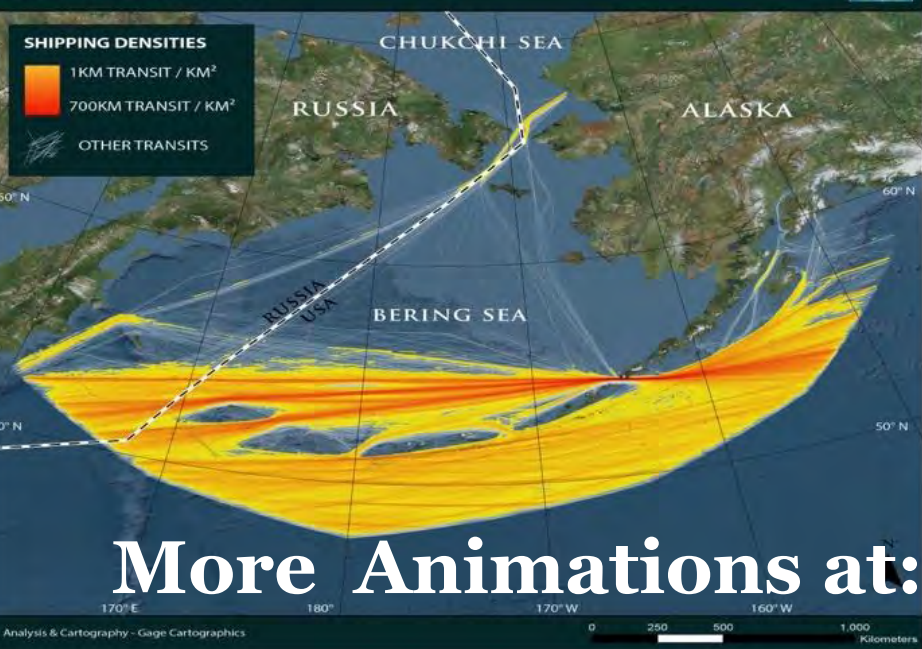
Vessel Drift Analysis in Unimak Pass...



Vessel Simulation Modeling with Changing Sea Ice...



BULK CARRIERS



DRY GOODS



More Animations at: ABSILCC.org

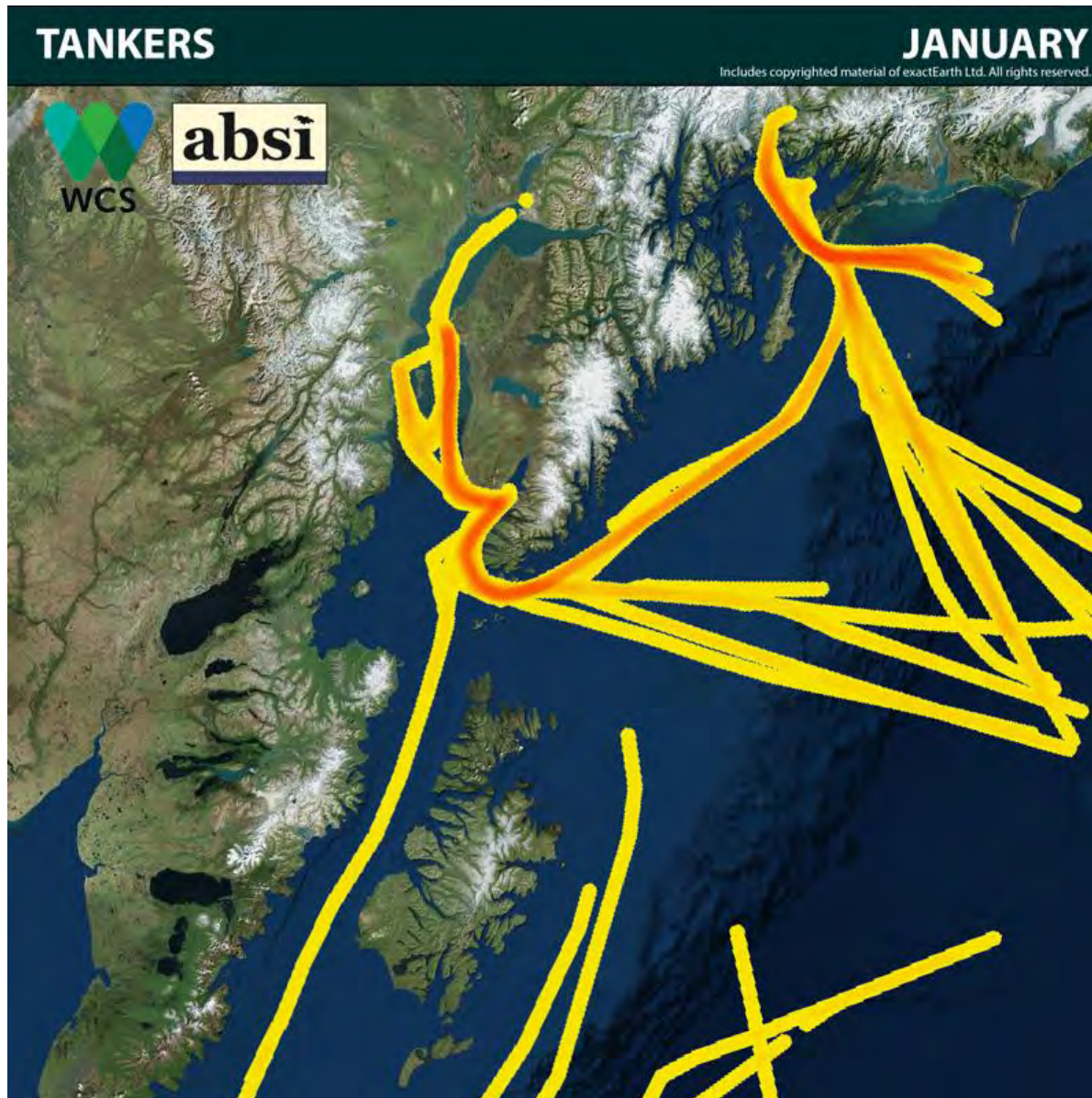
TANKERS



FISHING

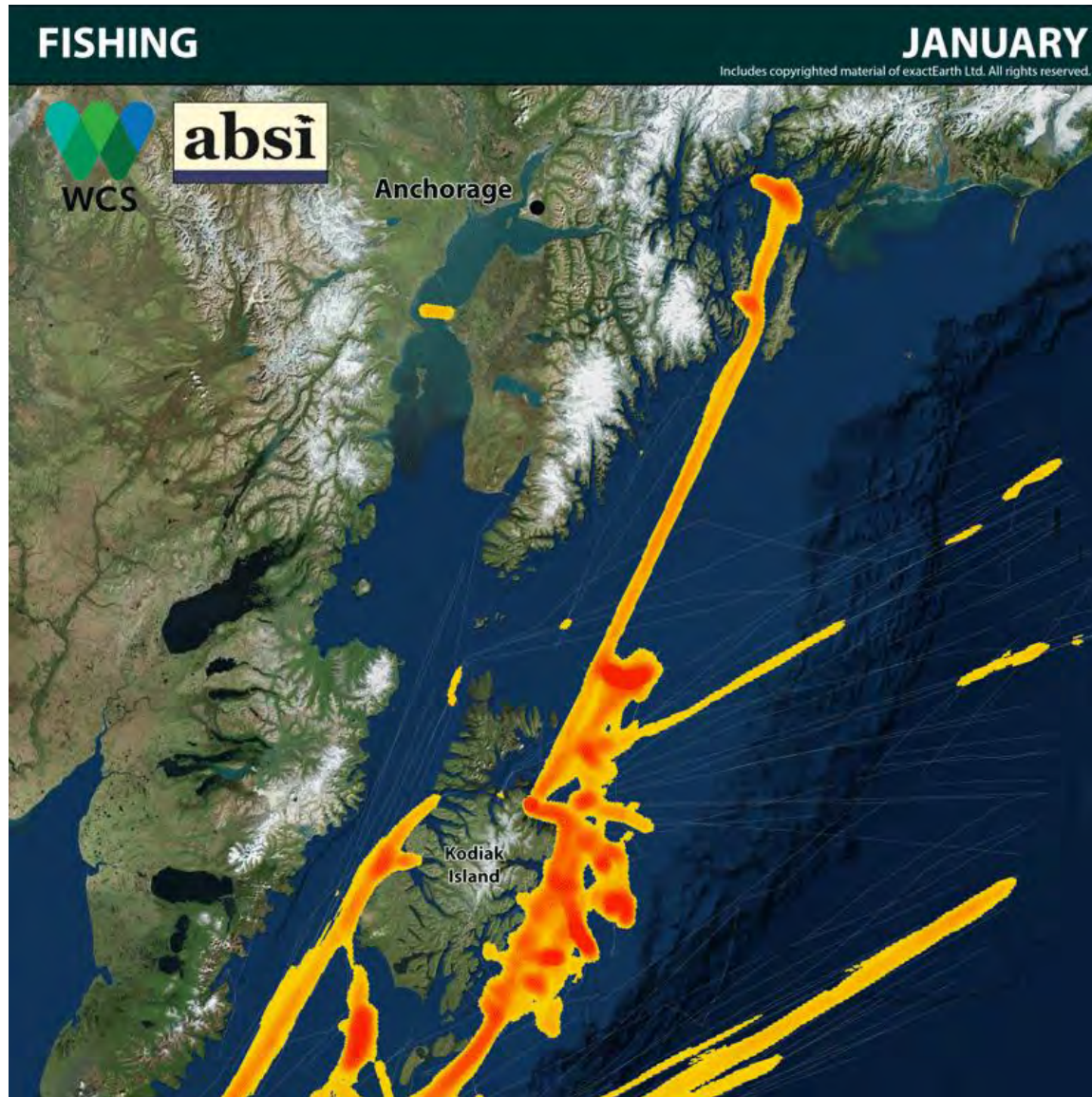


And a little closer to home...

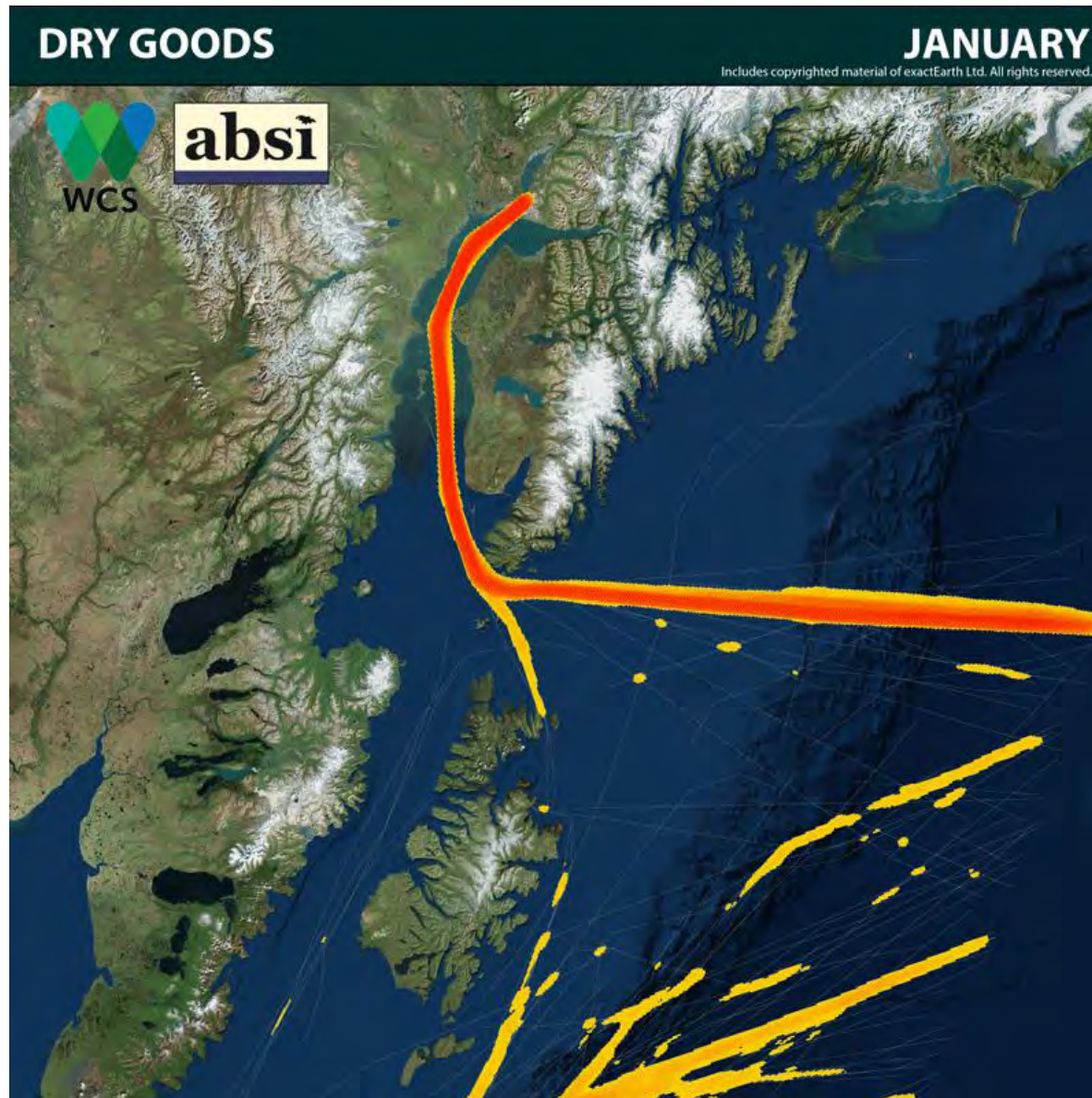


absi

And a little closer to home...



And a little closer to home...



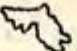
The Aleutian Life Forum

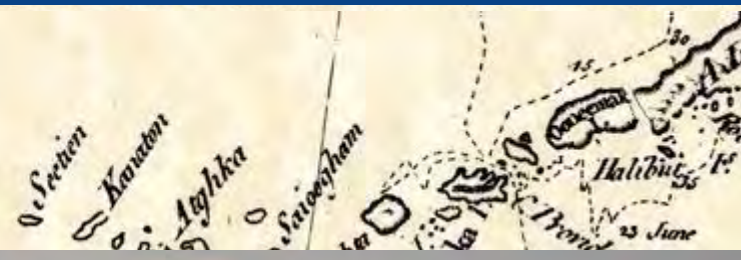
- **August 13-19 2016 in Unalaska**
- Qawalangin Tribe is bringing in regional Tribal leaders with BIA grant
- Science presentations focus on:
 - Climate change and sustainable fisheries
 - Ocean Acidification
 - **Vessel Traffic and Spill Response**
 - Coastal Hazards
 - Establishing Effective Local Observer Networks
 - Effective Science Communication
- A workshop focused on issues of coastal resilience



absi

**Aleutian and Bering Sea Islands
Landscape Conservation Cooperative**

Alaska  *Shaninae*



Questions or Ideas?



**Aaron_Poe@fws.gov
ABSILCC.org & Twitter: @ABSILCC**